

5.2 Preparation

Prior to creating the components or reference sets in an extension, some preliminary steps must be completed. These tasks include:

1. Obtaining a namespace identifier from SNOMED International
 - A namespace identifier is required to generate component identifiers (SCTIDs)
2. Acquiring the appropriate tools to support the creation, management, and distribution of the extension
 - Which tools, functionalities and services are required will depend on the content of the extension
 - For more information please refer to [Tooling Requirements](#)
 - Note that these tools will be used to complete the steps listed below
3. Creating module(s)
 - At least one module concept is required
 - Components and reference sets which belong to the extension are assigned to the appropriate module
4. Specifying module dependencies
 - These dependencies are specified using the [Module Dependency Reference Set](#)
 - This informs the consumers of the extension as to which additional modules are required to use/process the content of the extension
 - Note that some of these modules will come from other editions (such as the International Edition) and possibly, other extensions

[Figure 5.2-1](#) illustrates these key steps during the initial stage of extension creation.

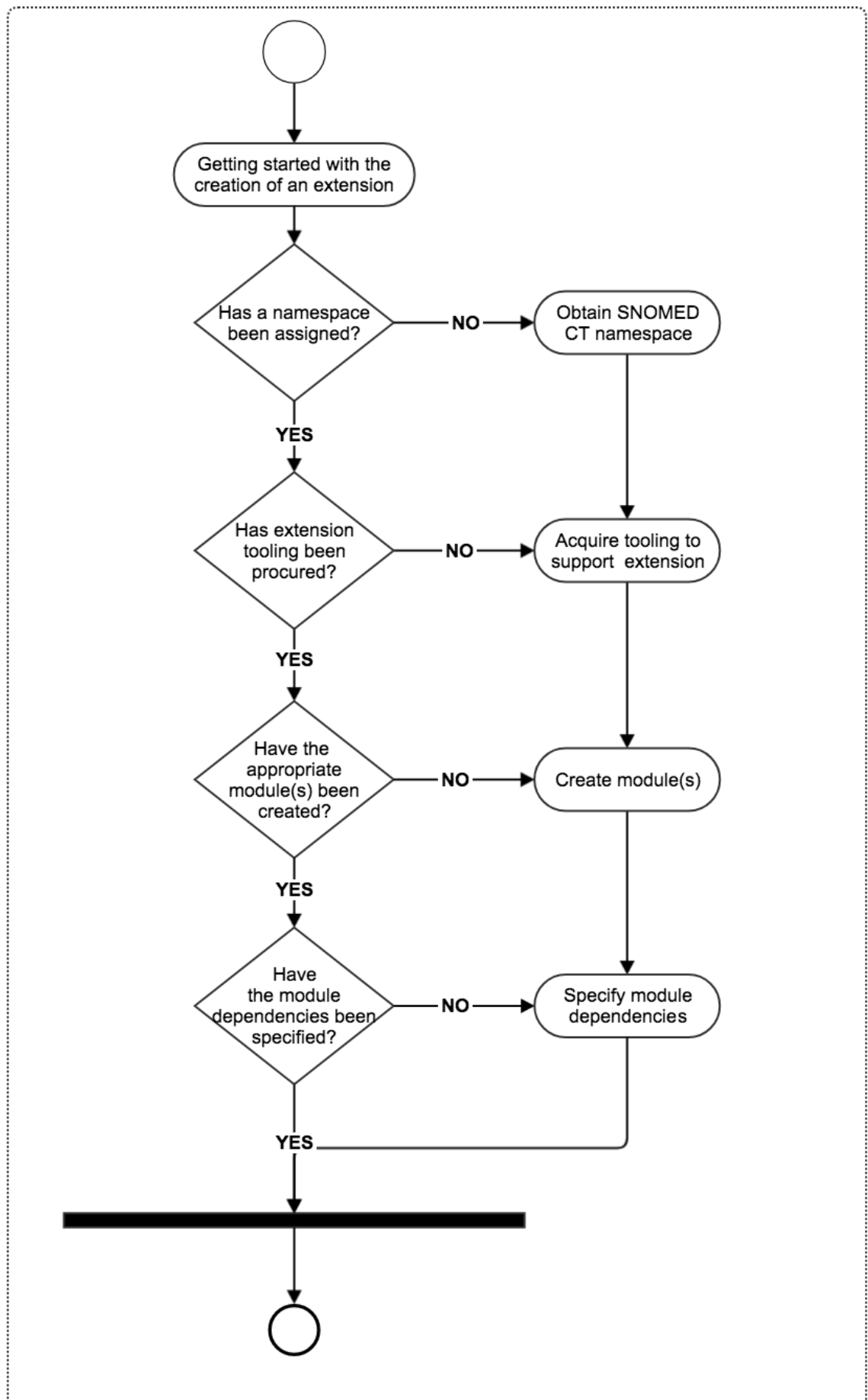




Figure 5.2-1: Prerequisites to creating an extension