

## 4.1 Details

Figure 3 below provides a non-normative representation of the logical model of the [SNOMED CT Expression Constraint Language](#) using a UML class diagram. Please note that each of the classes in this diagram corresponds to a rule in the syntax specification defined in [Chapter 5](#). For a short description of each of these, please refer to [Section 5.4](#).

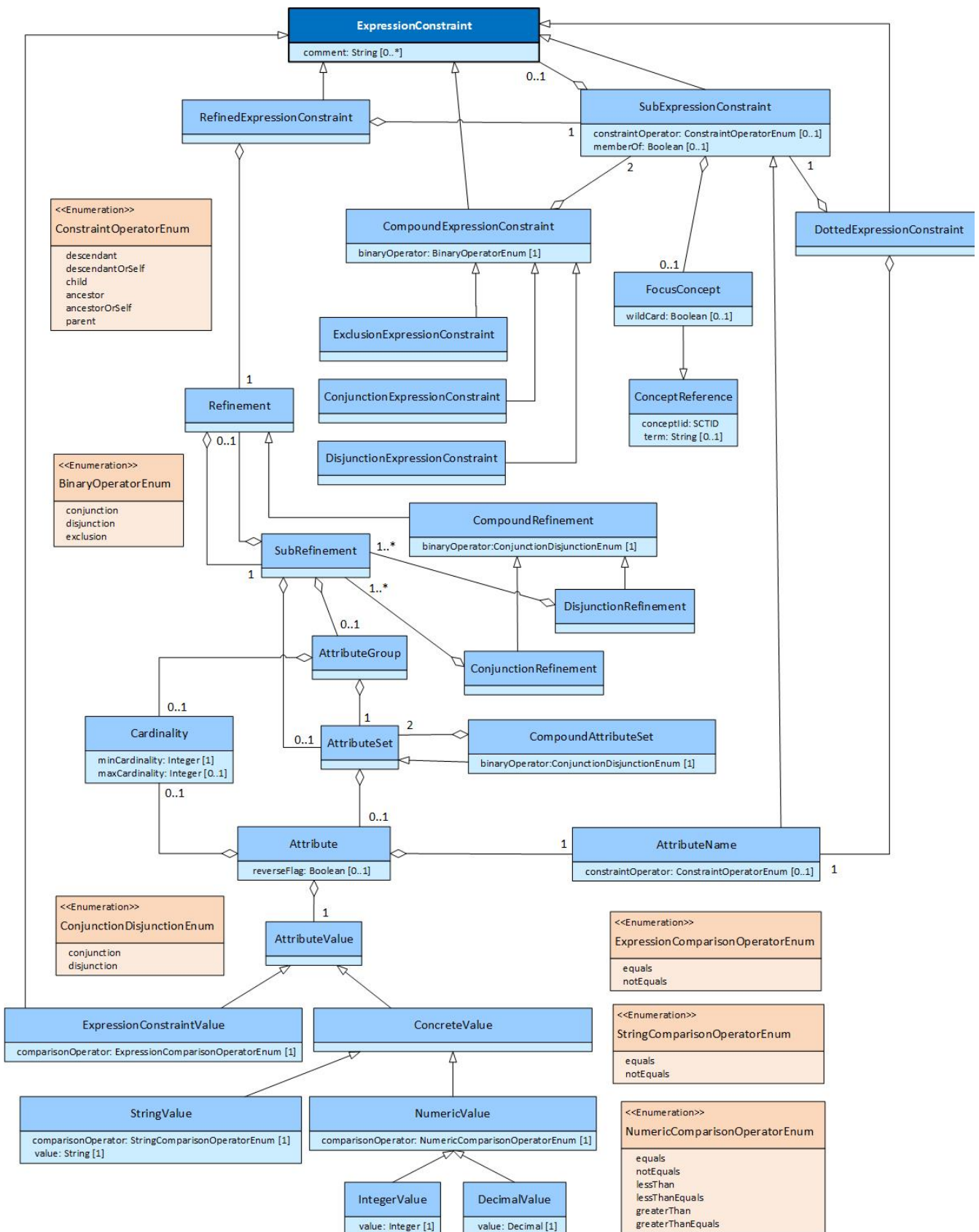


Figure 3: Logical Model of Expression Constraint Language