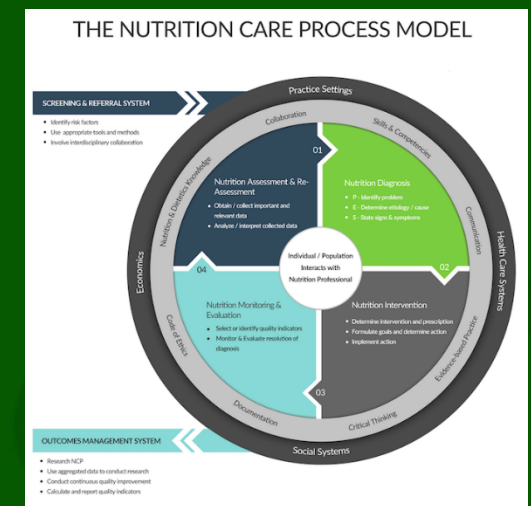


SNOMED CT and Nutrition Care Process

Constantina (Tina) Papoutsakis, PhD, RD
Senior Director,
Nutrition and Dietetics Data Science Center
Research, International, and Scientific Affairs
Academy of Nutrition and Dietetics (AND)



Constantina (Tina) Papoutsakis, PhD, RD

Disclosures

- Senior Director, Nutrition and Dietetics Data Science Center
Research, International, and Scientific Affairs
Academy of Nutrition and Dietetics (AND)
- Member of the Executive Committee of European Federation
of Associations of Dietitians (EFAD)
- Chair, Professional Practice Committee of EFAD

Meet the NCP Terminology Leads



Lee Unangst, MS, RD



Donna G. Pertel, MEd, RD

- Showcase the work currently underway between SNOMED CT and the broader community of international dietitians/nutritionists
- Share current practice and work in progress to support nutrition terminology that provides SNOMED CT with usable input from dietitians/nutritionists

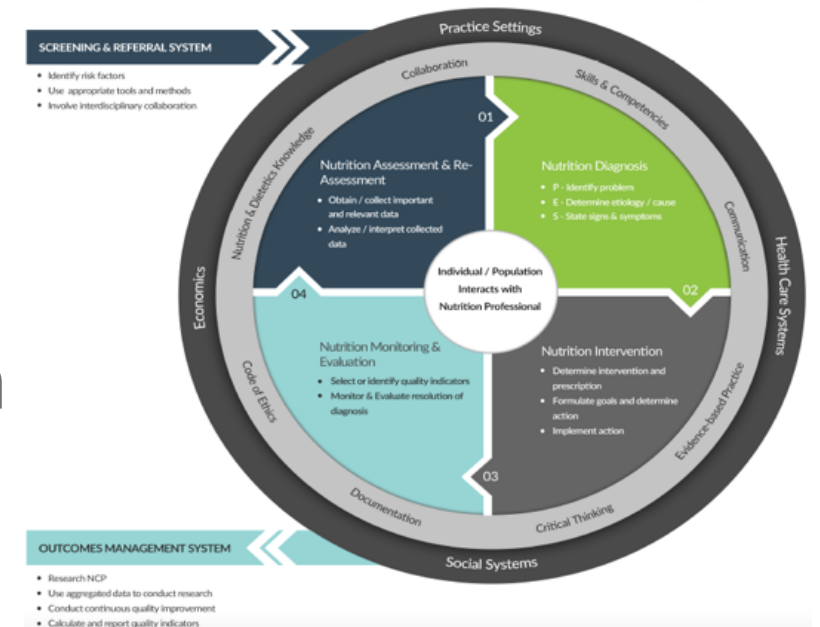
Nutrition Care Process (NCP)

- Problem solving framework
- Practice documentation and research

NCP Terminology (NCPT)

- Nutrition Care Process and Research Outcomes Committee
- International adoption and contribution

THE NUTRITION CARE PROCESS MODEL



Nutrition Care Process and Model Update: Toward Realizing People-Centered Care and Outcomes Management. Swan WI, Vivanti A, Hakel-Smith NA, Hotson B, Orrevall Y, Trostler N, Beck Howarter K, Papoutsakis C. J Acad Nutr Diet. 2017 Dec;117(12):2003-2014. doi: 10.1016/j.jand.2017.07.015. Epub 2017 Oct 5.

Nutrition Care Process (NCP) Update Part 2: Developing and Using the NCP Terminology to Demonstrate Efficacy of Nutrition Care and Related Outcomes. Swan WI, Pertel DG, Hotson B, Lloyd L, Orrevall Y, Trostler N, Vivanti A, Howarter KB, Papoutsakis C. J Acad Nutr Diet. 2019 May;119(5):840-855. doi: 10.1016/j.jand.2018.10.025. Epub 2019 Jan 16.

Real-Time eNCPT (electronic NCP Terminology) Use Worldwide

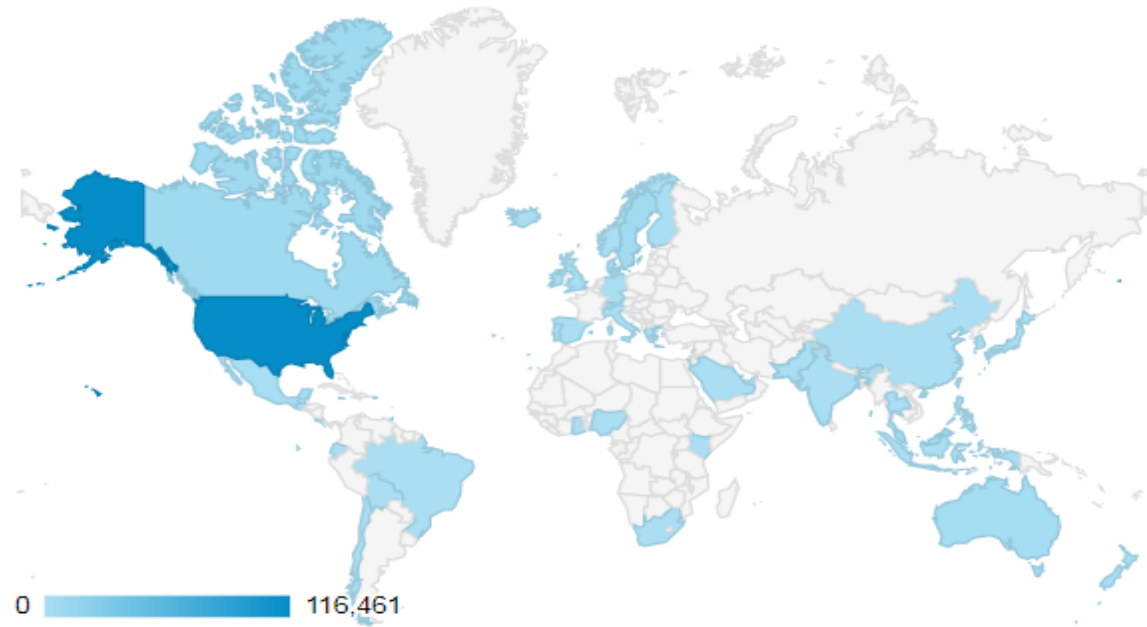
Online Translations of terms Now Available in 7 Languages

Current Translations

- Danish (Denmark)
- French (Canada)
- German (Switzerland)
- Norwegian (Norway)
- Swedish (Sweden)
- Simplified Chinese (China)
- Traditional Chinese (Taiwan)

Coming Soon

- Portuguese (Brazil)
- Spanish (Mexico)



Translating Terminology for the Nutrition Care Process: The Swedish Experience (2010-2016). McGreevy J, Orrevall Y. J Acad Nutr Diet. 2017 Mar;117(3):469-476. doi: 10.1016/j.jand.2016.06.366. Epub 2016 Aug 8.

- Meeting in Bratislava, Oct 2017
- Clinical Project Group – NCPT (international participation)
- **Promotion of NCPT from US extension to SI - complete**



The screenshot shows a Zoom meeting window with two participants: Constantina Papo and Jane Millar. The main content is a browser window displaying a Confluence page titled "Nutrition Care Process Terminology Clinical Project Group". The page includes a welcome message, a list of project objectives, and a project timescales section. The objectives are:

- Quality assurance of promoted NCPT related terms from US extension (685 concepts)
- Review and confirm remaining NCPT content for addition to the SNOMED CT International release (approx. 1000 concepts)
- Prepare and model 100 concepts for initial pilot for addition to the SNOMED CT International Release
- Review the outcomes of the initial pilot to inform next steps
- Prepare and model the remaining content for addition to the SNOMED CT International Release
- Clinical review of resulting refset
- Agree on updating process and maintenance plans, in line with NCPT developments

The project timescales section states:

- To be confirmed based on a detailed project plan agreed with SNOMED international

Welcome to the Nutrition Care Process Terminology Clinical Project Group space

This project group has been established to undertake the following:

- Quality assurance of promoted NCPT related terms from US extension (685 concepts)
- Review and confirm remaining NCPT content for **addition to the SNOMED CT International release** (approx. 1000 concepts)
- Prepare and model 100 concepts for initial pilot** for addition to the SNOMED CT International Release
- Review the outcomes of the initial pilot to inform next steps
- Prepare and model the remaining content for addition to the SNOMED CT International Release
- Agree on updating process and maintenance plans, in line with NCPT developments
- Project time scales
 - To be confirmed based on a detailed project plan agreed with SNOMED international

Pilot Test Process-parallel work

Observables Gap lead to work on

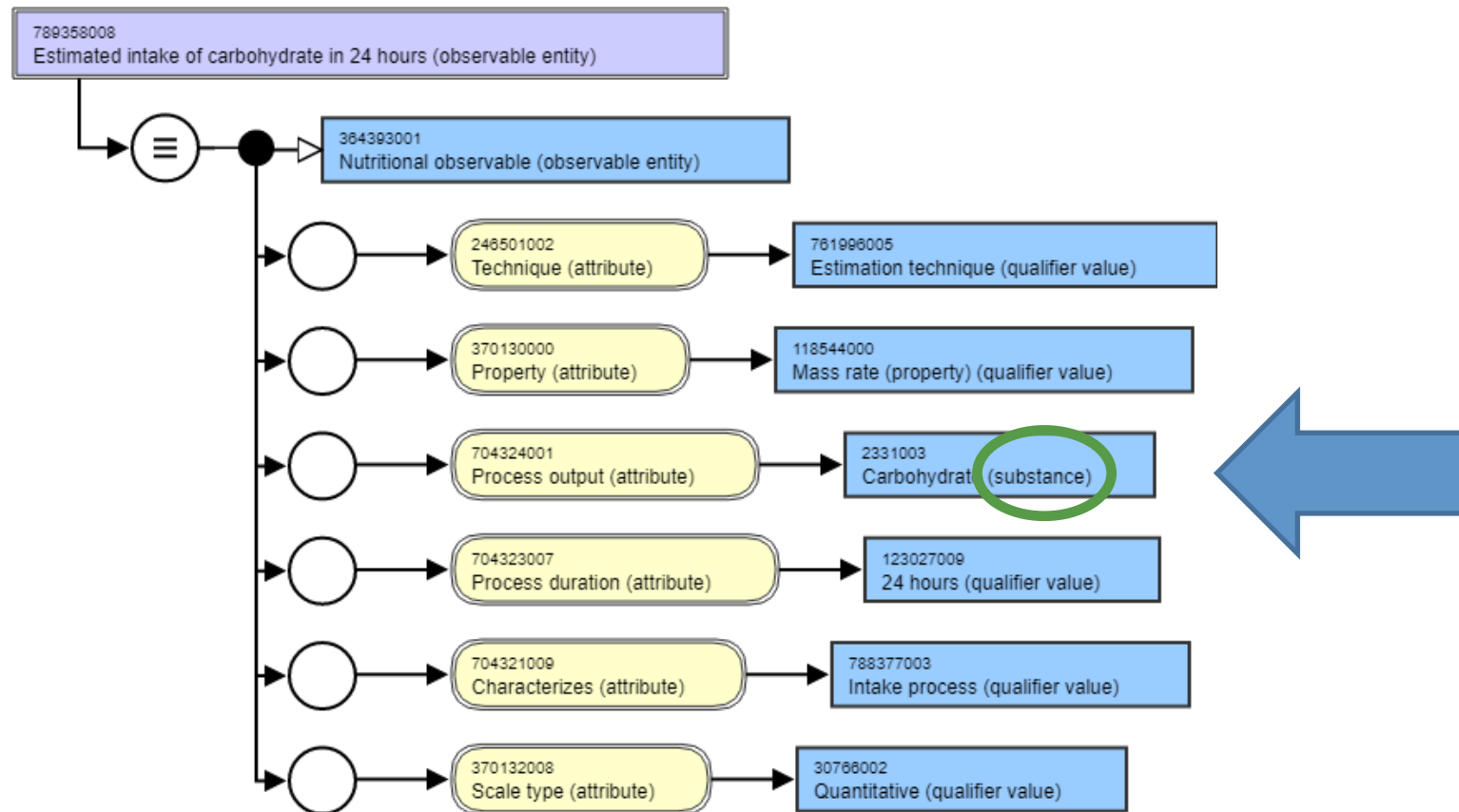
- **a template**
- **Participation/discussions w. Observables group**

Nutrition diagnosis
(findings)

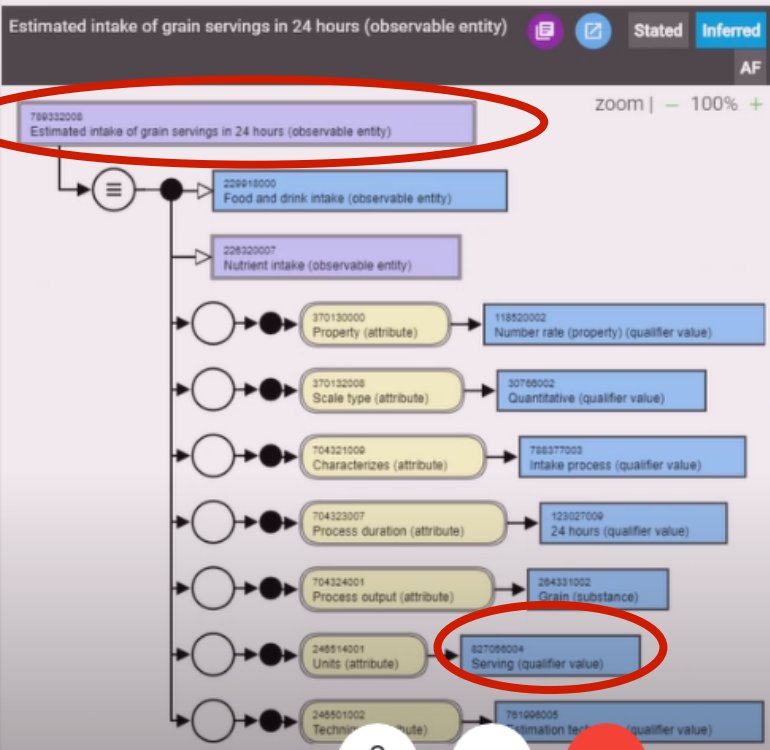
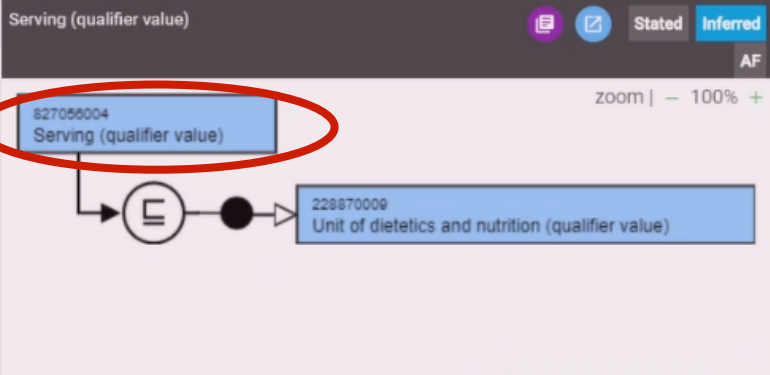
Nutrition intervention
(procedures, regime/
therapies)

Permission received to
add (nutrition
assessment observables)

Pilot Project Process: Result-Template for Nutrition Observables



- Saved List
- Estimated intake of fruit servings in 24 hours
 - Estimated intake of dairy foods servings in 24 hours
 - Estimated intake of fat servings in 24 hours
 - Estimated intake of grain servings in 24 hours
 - Estimated intake of vegetable servings in 24 hours
 - Estimated intake of protein food servings in 24 hours
 - Estimated intake of empty energy servings in 24 hours



Serving (qualifier value)

ci	Serving (qualifier value)	FSN	us:P	gb:P
ci	Serving	SYN	us:P	gb:P

Axiom

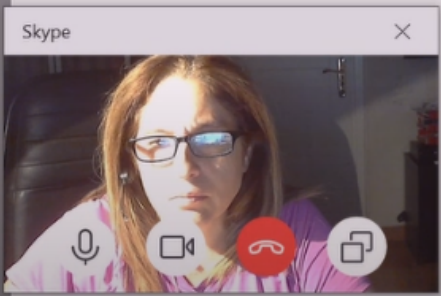
Is a	Unit of measure (qualifier value)
Is a	Unit of dietetics and nutrition (qualifier value)

Estimated intake of grain servings in 24 hours (observable entity)

ci	Estimated intake of grain servings in 24 hours (observable entity)	FSN	us:P	gb:P
ci	Estimated intake of grain servings in 24 hours	SYN	us:P	gb:P
CS	The approximate amount of grain-based foods consumed per day, where a serving is the amount of that food customarily considered a serving.	DEF	us:P	gb:P

Axiom

Is a	Food and drink intake (observable entity)
Property	Number rate (property) (qualifier value)
Scale type	Quantitative (qualifier value)
Characterizes	Intake process (qualifier value)
Process duration	24 hours (qualifier value)
Process output	Grain (substance)
Units	Serving (qualifier value)





Working with other groups has greatly expanded group's knowledge and understanding

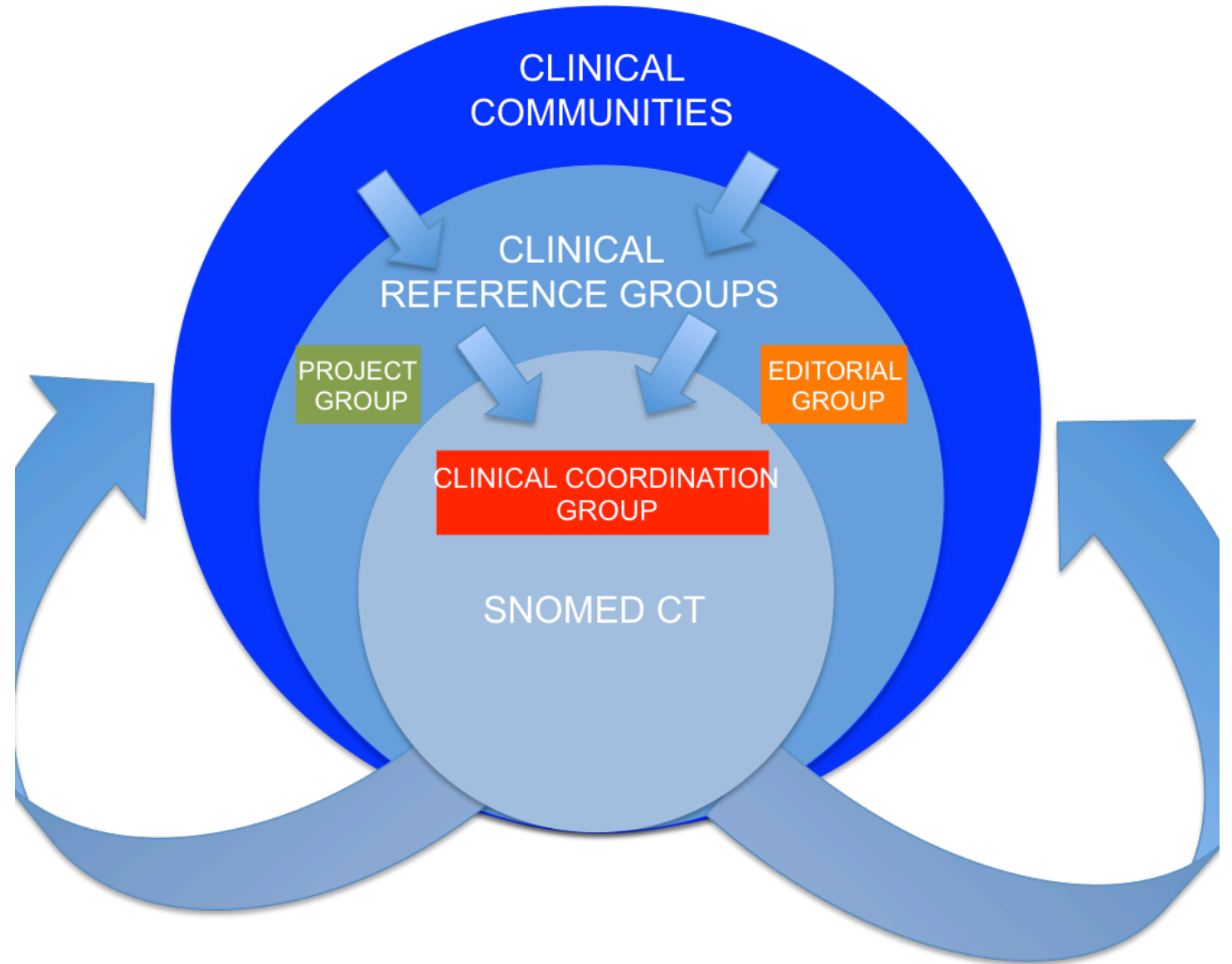
The NCPT CPG brings a nutrition focus to SNOMED International

We leveraged LOINC experience/knowledge to create a working nutrition observables template

Issues/questions surface that will need to be compiled and addressed by an appropriate group structure in the near future

Final points

- **Authoring (increased needs)**
- **Parallel work (responsiveness/ collaboration)**
- **Nutrition group-who has the terminology expertise to contribute in a meaningful way?**
- **Data Ecosystem**
 - WHO Digital Strategy
 - Gravity-food insecurity (US realm)
 - HL7 standards
 - Value sets
 - Nutrition Reference Set?
 - Translations
 - Clinical registry with nutrition care focus www.andhii.org



SNOMED International fit for purpose